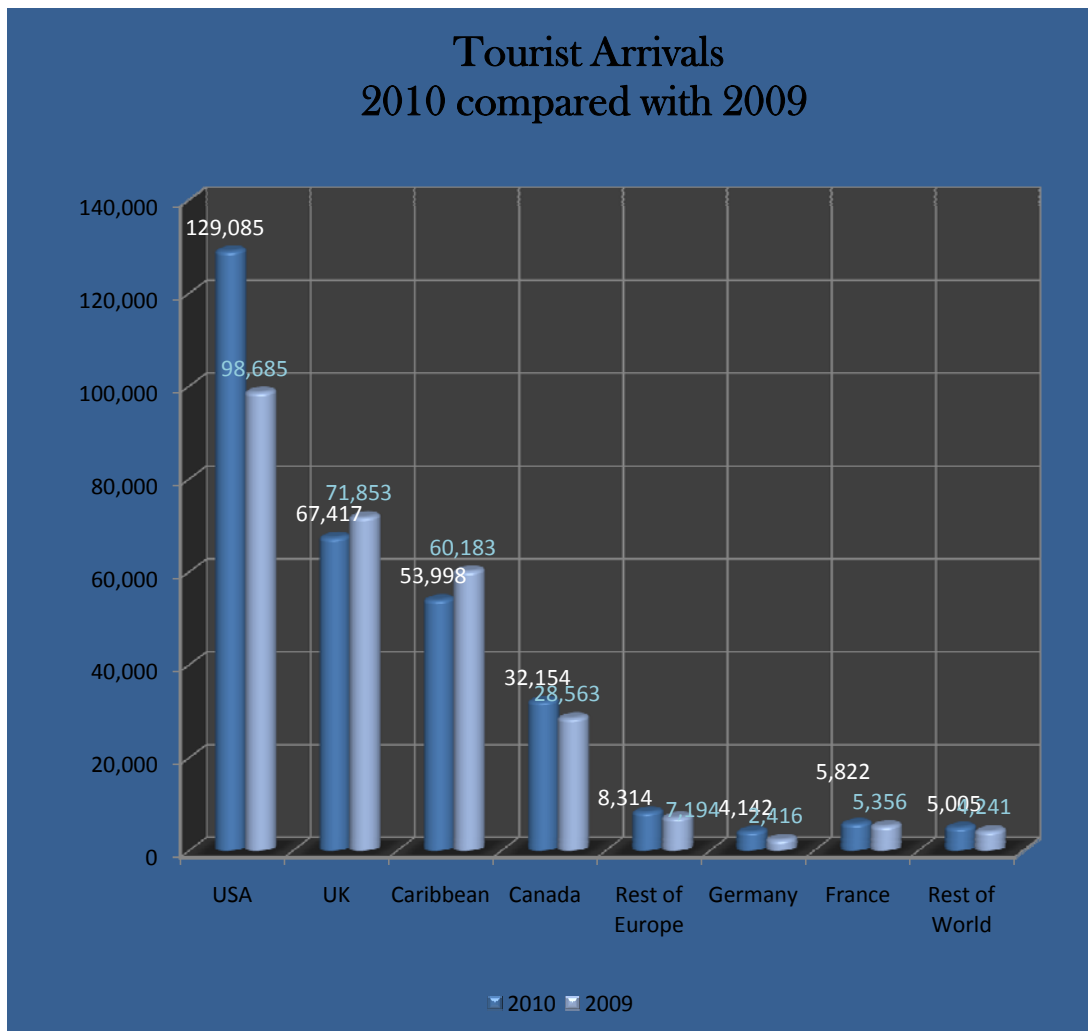


# SAINT LUCIA

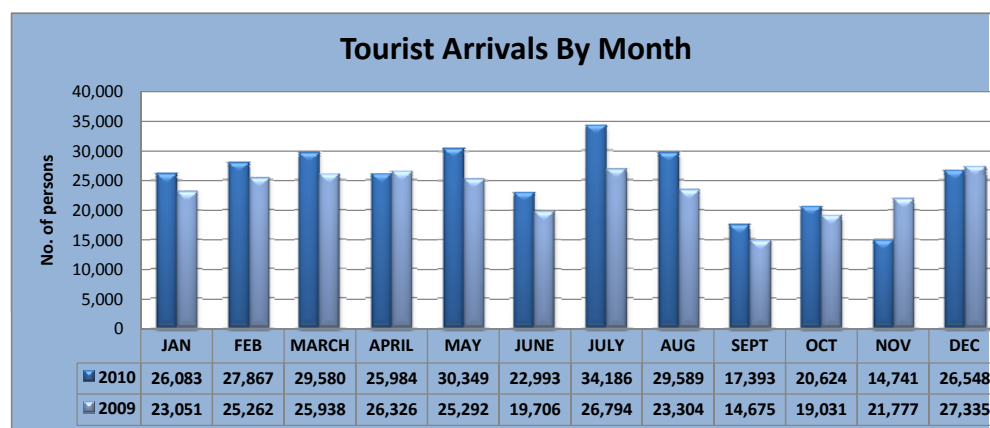
## TOURIST ARRIVALS (JANUARY - DECEMBER - 2010)



Source: Saint Lucia Tourist Board

## TOURIST ARRIVALS BY MONTHS

MONTH	2010	2009	ACT. CHG.	% CHANGE
JAN	26,083	23,051	3,032	13.2%
FEB	27,867	25,262	2,605	10.3%
MARCH	29,580	25,938	3,642	14.0%
APRIL	25,984	26,326	(342)	-1.3%
MAY	30,349	25,292	5,057	20.0%
JUNE	22,993	19,706	3,287	16.7%
JULY	34,186	26,794	7,392	27.6%
AUG	29,589	23,304	6,285	27.0%
SEPT	17,393	14,675	2,718	18.5%
OCT	20,624	19,031	1,593	8.4%
NOV	14,741	21,777	(7,036)	-32.3%
DEC	26,548	27,335	(787)	-2.9%
<b>TOTAL</b>	<b>305,937</b>	<b>278,491</b>	<b>27,446</b>	<b>9.9%</b>



## TOURIST ARRIVALS BY MARKETS JANUARY - DECEMBER 2010/2009

Markets	2010	2009	ACT. CHG.	% CHANGE
USA	129,085	98,685	30,400	30.8%
UK	67,417	71,853	(4,436)	-6.2%
Caribbean	53,998	60,183	(6,185)	-10.3%
Canada	32,154	28,563	3,591	12.6%
Rest of Europe	8,314	7,194	1,120	15.6%
Germany	4,142	2,416	1,726	71.4%
France	5,822	5,356	466	8.7%
Rest of World	5,005	4,241	764	18.0%
<b>Total</b>	<b>305,937</b>	<b>278,491</b>	<b>27,446</b>	<b>9.9%</b>

Notes:

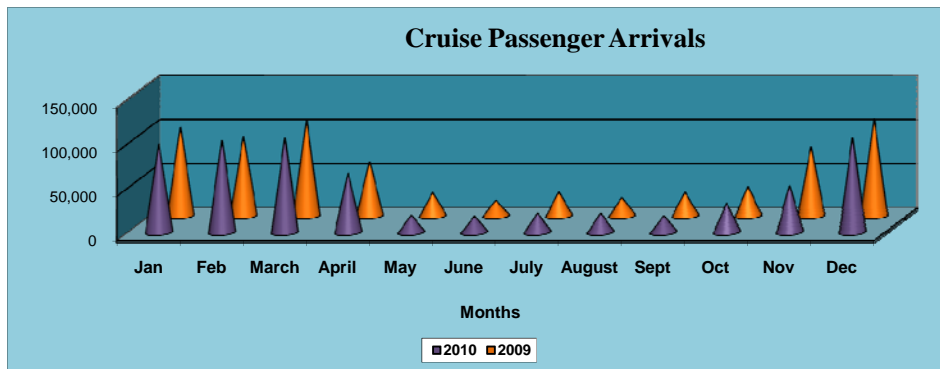
1. Rest of Europe - Holland, Italy, Austria, Belgium, Denmark, Greece, Ireland, Luxembourg, Norway, Portugal, Spain, Sweden, Switzerland

2. Primary data is obtained from the international ED Cards

\*Figures for 2010 are provisional and subject to revision

## CRUISE PASSENGER ARRIVALS

MONTHS	2010	2009	ACT. CHG.	% CHANGE
Jan	99,811	100,131	(320)	-0.3%
Feb	103,585	89,658	13,927	15.5%
March	106,854	108,392	(1,538)	-1.4%
April	66,874	61,213	5,661	9.2%
May	19,384	26,489	(7,105)	-26.8%
June	18,339	17,792	547	3.1%
July	21,910	27,007	(5,097)	-18.9%
August	21,729	20,890	839	4.0%
Sept	18,875	26,774	(7,899)	-29.5%
Oct	32,795	32,892	(97)	-0.3%
Nov	52,516	78,213	(25,697)	-32.9%
Dec	107,371	109,855	(2,484)	-2.3%
<b>TOTAL</b>	<b>670,043</b>	<b>699,306</b>	<b>(29,263)</b>	<b>-4.2%</b>



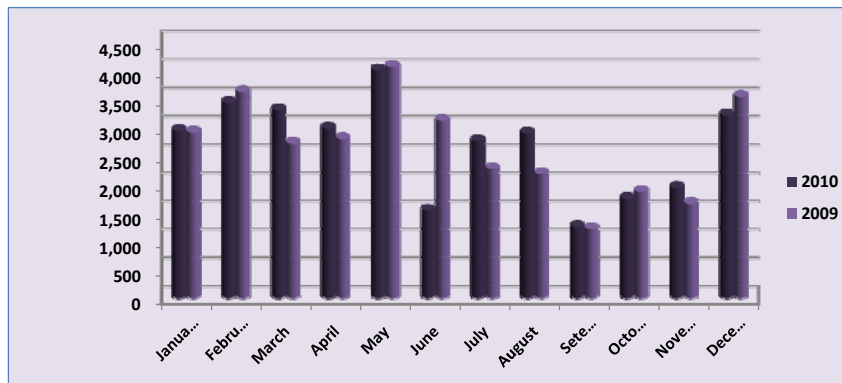
## CRUISE SHIP CALLS

MONTHS	2010	2009	ACT.CHG.	%CHANGE
January	65	56	9	16.1%
February	59	52	7	13.5%
March	74	66	8	12.1%
April	34	36	(2)	-5.6%
May	13	13	0	0.0%
June	9	10	(1)	-10.0%
July	8	14	(6)	-42.9%
August	7	9	(2)	-22.2%
September	7	12	(5)	-41.7%
October	14	17	(3)	-17.6%
November	27	45	(18)	-40.0%
December	63	67	(4)	-6.0%
<b>TOTAL</b>	<b>380</b>	<b>397</b>	<b>(17)</b>	<b>-4.3%</b>

Source: SLASPA

### RODNEY BAY MARINA YACHT ARRIVALS

Months	2010	2009	ACT. CHG.	% CHANGE
January	2,941	2,918	23	0.8%
February	3,442	3,631	(189)	-5.2%
March	3,306	2,722	584	21.5%
April	2,989	2,804	185	6.6%
May	4,015	4,075	(60)	-1.5%
June	1,538	3,121	(1,583)	-50.7%
July	2,763	2,268	495	21.8%
August	2,903	2,181	722	33.1%
September	1,246	1,213	33	2.7%
October	1,748	1,864	(116)	-6.2%
November	1,940	1,656	284	17.1%
December	3,221	3,544	(323)	-9.1%
<b>TOTAL</b>	<b>32,052</b>	<b>31,997</b>	<b>55</b>	<b>0.2%</b>



### Yacht Calls

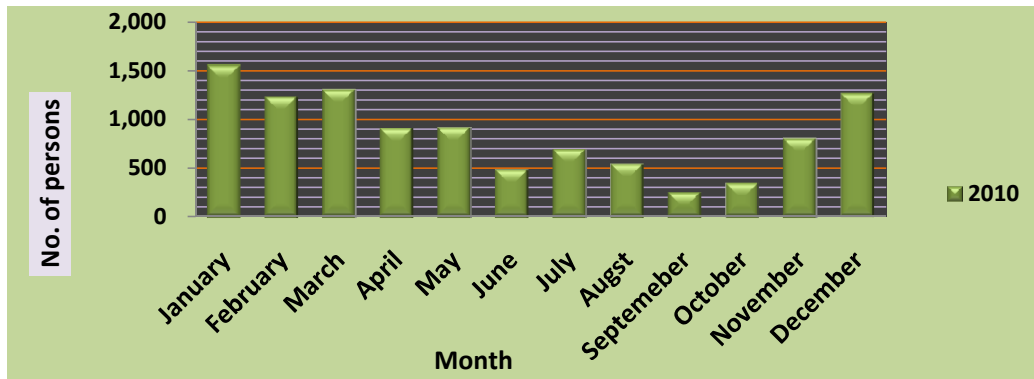
MONTHS	2010	2009	ACT.CHG.	%CHANGE
January	761	609	152	25.0%
February	816	883	(67)	-7.6%
March	781	665	116	17.4%
April	669	554	115	20.8%
May	748	573	175	30.5%
June	287	327	(40)	-12.2%
July	394	352	42	11.9%
August	416	463	(47)	-10.2%
September	174	240	(66)	-27.5%
October	274	358	(84)	-23.5%
November	383	391	(8)	-2.0%
December	680	705	(25)	-3.5%
<b>TOTAL</b>	<b>6,383</b>	<b>6,120</b>	<b>263</b>	<b>4.3%</b>

Source: SLASPA

\* Representative of arrivals from Rodney Bay Marina Only

## MARIGOT BAY YACHT ARRIVALS

Months	2010
January	1,558
February	1,227
March	1,301
April	906
May	912
June	480
July	689
Augst	538
Septemeber	247
October	342
November	799
December	1,260
<b>TOTAL</b>	<b>10,259</b>



## Yacht Calls

MONTHS	2010
January	314
February	255
March	256
April	171
May	209
June	110
July	121
August	101
September	39
October	74
November	161
December	252
<b>TOTAL</b>	<b>2,063</b>

Source: SLASPA

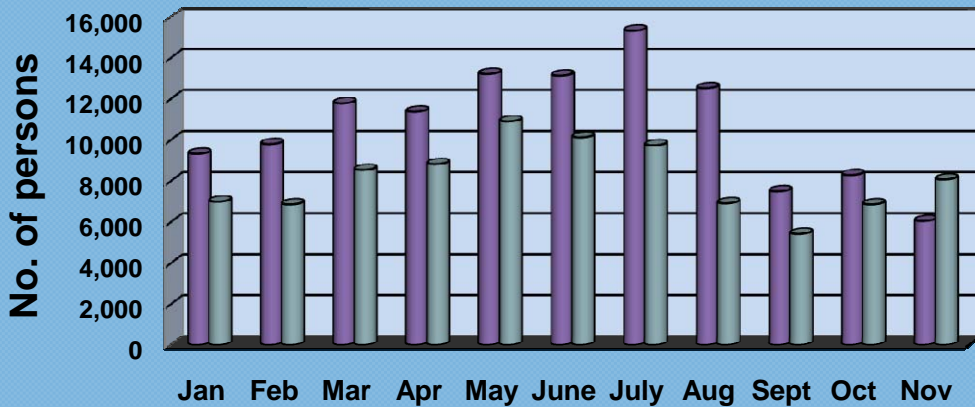
\* Representative of arrivals from Marigot Bay Only

\*Note that the figures are only available for 2010 only.

## US Tourist Arrivals By Month

Months	2010	2009	ACT. CHG.	% Change
Jan	9,348	7,016	2,332	33.2%
Feb	9,822	6,884	2,938	42.7%
Mar	11,810	8,564	3,246	37.9%
Apr	11,404	8,848	2,556	28.9%
May	13,236	10,926	2,310	21.1%
June	13,156	10,144	3,012	29.7%
July	15,346	9,762	5,584	57.2%
Aug	12,544	6,938	5,606	80.8%
Sept	7,520	5,448	2,072	38.0%
Oct	8,314	6,884	1,430	20.8%
Nov	6,078	8,101	(2,023)	-25.0%
Dec	10,507	9,170	1,337	14.6%
<b>Total</b>	<b>129,085</b>	<b>98,685</b>	<b>30,400</b>	<b>30.8%</b>

### United States Tourist Arrivals Year-to-Date



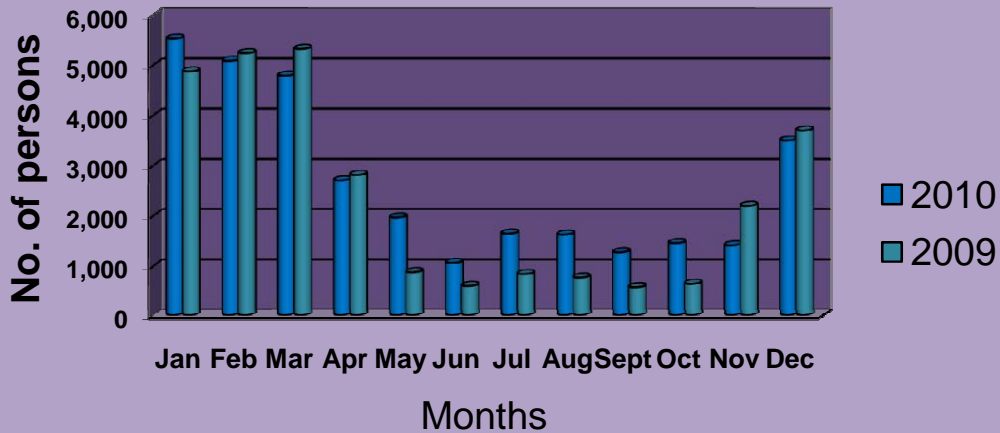
USA Tourist Arrivals by State January - December 2010/09

States by Regions	2010												2009												% Change 2010/09			
	Jan	Feb	Mar	Apr	May	June	July	August	September	October	November	December	Total	Jan	Feb	Mar	Apr	May	June	July	August	September	October	November		December	Total	
<b>North East</b>	<b>2,395</b>	<b>3,205</b>	<b>3,539</b>	<b>3,018</b>	<b>2,896</b>	<b>2,567</b>	<b>4,880</b>	<b>3,566</b>	<b>1,997</b>	<b>1,654</b>	<b>1,493</b>	<b>2,922</b>	<b>33,232</b>	<b>1,564</b>	<b>1,899</b>	<b>1,931</b>	<b>2,098</b>	<b>1,766</b>	<b>1,554</b>	<b>2,225</b>	<b>1,897</b>	<b>974</b>	<b>1,805</b>	<b>2,001</b>	<b>2,598</b>	<b>21,509</b>	<b>54.5%</b>	
Connecticut	248	357	375	476	251	209	394	319	196	199	201	280	3,571	211	242	268	207	153	270	236	177	131	168	182	280	2,525	<b>41.4%</b>	
Maine	17	54	66	42	25	22	14	21	33	11	15	18	338	7	5	6	4	2	5	7	3	7	4	14	9	73	<b>363.0%</b>	
Massachusetts	498	540	562	467	452	392	440	475	276	305	201	359	4,967	284	297	347	336	296	234	240	228	191	243	291	268	3,255	<b>52.6%</b>	
Rhode Island	55	82	69	39	55	63	44	58	31	46	24	40	606	20	17	48	15	38	48	35	38	35	30	37	32	393	<b>54.2%</b>	
Vermont	44	50	49	51	20	9	5	20	22	3	9	20	302	8	13	38	25	18	1	18	3	8	6	15	19	172	<b>75.6%</b>	
New York	1,461	1,981	2,309	1,830	2,043	1,733	3,428	2,619	982	1,025	1,004	2,511	22,566	966	1,261	1,138	1,433	1,203	952	1,648	1,109	556	807	1,406	1,606	19,318	<b>144.17%</b>	
New Hampshire	72	141	109	113	50	79	55	54	57	65	39	48	882	68	64	86	78	56	44	41	39	46	47	56	49	674	<b>30.9%</b>	
<b>Mid Atlantic</b>	<b>1,344</b>	<b>1,127</b>	<b>1,542</b>	<b>1,391</b>	<b>1,951</b>	<b>1,867</b>	<b>2,375</b>	<b>1,941</b>	<b>1,091</b>	<b>1,325</b>	<b>875</b>	<b>1,198</b>	<b>18,027</b>	<b>1,107</b>	<b>901</b>	<b>1,005</b>	<b>1,187</b>	<b>1,570</b>	<b>1,404</b>	<b>1,514</b>	<b>1,032</b>	<b>825</b>	<b>921</b>	<b>1,288</b>	<b>1,154</b>	<b>13,908</b>	<b>29.6%</b>	
District of Columbia	6	7	9	6	6	1	7	5	6	15	6	5	79	1	8	8	9	10	1	8	2	4	11	10	7	79	<b>0.0%</b>	
Delaware	43	26	35	43	85	70	60	34	35	43	24	29	527	30	32	44	44	75	43	37	28	33	37	37	24	464	<b>13.6%</b>	
New Jersey	501	431	585	661	746	687	1,033	891	396	523	359	472	7,285	338	295	365	491	541	425	551	434	290	336	531	462	5,079	<b>43.4%</b>	
Maryland	236	215	345	240	444	410	534	395	257	329	149	295	3,849	270	222	215	277	365	391	369	231	178	167	241	295	3,221	<b>19.5%</b>	
Pennsylvania	558	448	568	441	670	699	741	616	397	418	337	397	6,287	448	344	373	366	579	544	549	337	320	370	469	366	5,065	<b>24.1%</b>	
<b>South</b>	<b>2,322</b>	<b>2,177</b>	<b>3,389</b>	<b>3,840</b>	<b>4,606</b>	<b>4,867</b>	<b>4,836</b>	<b>3,527</b>	<b>2,493</b>	<b>2,980</b>	<b>1,968</b>	<b>2,924</b>	<b>39,839</b>	<b>2,069</b>	<b>1,773</b>	<b>2,920</b>	<b>3,135</b>	<b>4,240</b>	<b>4,093</b>	<b>3,484</b>	<b>2,373</b>	<b>1,977</b>	<b>2,644</b>	<b>2,512</b>	<b>2,678</b>	<b>33,798</b>	<b>17.9%</b>	
Alabama	52	64	122	119	174	194	143	171	96	74	57	105	1,371	60	39	131	131	231	160	96	101	57	105	70	78	1,259	<b>8.9%</b>	
Carolina, North	321	268	378	445	563	513	574	517	301	378	228	322	4,808	157	168	205	268	420	382	334	229	215	221	227	352	3,178	<b>51.3%</b>	
Carolina, South	40	41	163	187	222	226	199	152	101	126	102	16	1,575	83	53	88	128	164	161	148	68	69	94	81	86	1,223	<b>28.8%</b>	
Arkansas	47	33	37	34	44	85	56	25	34	16	9	35	455	21	18	29	17	51	51	40	34	27	27	20	364	<b>25.0%</b>		
Kentucky	67	69	66	112	125	151	121	106	88	57	58	79	1,099	40	34	83	49	149	135	89	65	71	92	45	50	902	<b>21.8%</b>	
Virginia	462	418	485	538	568	683	694	488	328	426	267	402	5,759	277	283	320	355	552	445	418	349	199	400	321	369	4,288	<b>34.3%</b>	
Florida	475	490	752	840	926	880	909	629	511	611	547	767	8,337	694	486	787	740	899	750	681	403	425	616	624	666	7,771	<b>7.3%</b>	
Texas	356	258	544	483	811	894	909	684	397	494	269	437	6,536	324	257	511	529	662	835	695	432	434	452	429	5,910	<b>10.6%</b>		
Georgia	259	335	448	654	535	634	667	353	320	367	219	400	5,191	208	253	404	521	666	613	540	277	287	312	297	331	4,709	<b>10.2%</b>	
Louisiana	83	48	128	152	234	219	153	81	70	104	93	100	1,465	53	49	114	144	234	206	142	78	71	84	156	103	1,436	<b>2.0%</b>	
West Virginia	9	30	25	12	47	40	56	32	20	21	3	17	312	1	13	17	34	25	27	32	27	7	13	23	8	227	<b>37.4%</b>	
Oklahoma	15	16	46	56	70	68	62	69	41	41	25	38	567	32	32	56	53	117	99	55	50	55	45	15	39	648	<b>-12.5%</b>	
Mississippi	9	11	59	49	84	70	67	64	36	24	24	39	536	19	9	25	30	43	64	49	35	21	25	24	29	373	<b>43.7%</b>	
Tennessee	107	96	136	159	203	210	226	156	150	151	67	167	1,828	100	79	150	136	27	165	165	125	128	176	152	107	1,510	<b>21.1%</b>	
<b>Mid West</b>	<b>1,837</b>	<b>1,890</b>	<b>2,033</b>	<b>1,537</b>	<b>1,779</b>	<b>1,954</b>	<b>1,853</b>	<b>1,717</b>	<b>1,111</b>	<b>1,132</b>	<b>812</b>	<b>1,760</b>	<b>19,415</b>	<b>1,315</b>	<b>1,354</b>	<b>1,493</b>	<b>1,273</b>	<b>1,544</b>	<b>1,647</b>	<b>1,277</b>	<b>971</b>	<b>897</b>	<b>1,081</b>	<b>1,120</b>	<b>1,401</b>	<b>15,373</b>	<b>26.3%</b>	
Dakota, North	19	14	9	8	3	20	6	7	5	3	3	2	4	100	8	13	5	2	3	3	-	-	5	1	2	5	47	<b>112.8%</b>
Dakota, South	40	41	30	6	5	6	7	13	6	1	11	126	292	10	16	13	8	14	7	2	5	10	1	7	10	103	<b>183.5%</b>	
Illinois	353	379	479	392	470	558	506	445	301	268	176	500	4,827	260	299	430	240	350	169	369	238	247	301	316	415	3,634	<b>32.8%</b>	
Indiana	158	92	152	142	200	188	177	187	134	149	86	101	1,766	114	74	112	102	159	365	128	72	89	88	79	120	1,502	<b>17.6%</b>	
Missouri	83	94	97	84	157	185	176	117	90	95	70	97	1,345	112	69	108	126	160	169	117	81	97	114	106	64	1,323	<b>1.7%</b>	
Iowa	80	124	160	43	79	69	60	51	39	30	58	46	839	102	56	56	49	41	62	35	21	14	19	53	54	562	<b>49.3%</b>	
Kansas	81	60	73	75	101	106	104	102	59	48	47	49	905	54	35	70	55	95	94	71	68	52	62	52	74	782	<b>15.7%</b>	
Michigan	210	259	251	208	146	225	184	222	105	113	95	253	2,271	189	183	180	213	152	207	109	146	106	119	120	209	1,903	<b>19.3%</b>	
Nebraska	27	34	30	26	29	37	19	28	20	22	16	14	302	21	26	23	9	28	16	28	15	15	11	15	29	236	<b>28.0%</b>	
Ohio	259	236	308	257	320	351	378	319	218	253	137	337	3,370	175	209	236	255	340	386	287	243	166	219	206	194	2,916	<b>15.6%</b>	
Minnesota	195	305	186	111	118	102	85	103	54	60	43	126	1,488	72	166	119	75	71	69	47	28	40	38	57	100	882	<b>68.7%</b>	
Wisconsin	332	252	258	185	151	107	151	123	83	96	71	107	1,910	228	208	141	139	131	100	84	54	56	108	107	127	1,483	<b>28.8%</b>	
<b>West</b>	<b>1,028</b>	<b>1,076</b>	<b>1,076</b>	<b>1,266</b>	<b>1,582</b>	<b>1,557</b>	<b>1,520</b>	<b>1,409</b>	<b>924</b>	<b>939</b>	<b>647</b>	<b>1,308</b>	<b>14,332</b>	<b>598</b>	<b>624</b>	<b>780</b>	<b>883</b>	<b>1,176</b>	<b>1,066</b>	<b>942</b>	<b>679</b>	<b>517</b>	<b>584</b>	<b>898</b>	<b>1,019</b>	<b>9,706</b>	<b>47.7%</b>	
Alaska	-	-	3	2	6	4	5	2	4	3	1	6	36	-	2	1	7	3	4	2	1	6	4	1	1	31	<b>16.1%</b>	
California	454	446	485	668	875	885	906	782	530	554	361	692	7,638	324	274	395	466	642	584	518	397	284	308	484	546	5,222	<b>46.3%</b>	
Colorado	154	166	200	214	208	261	214	201	125	108	104	177	2,132	71	60	119	130	159	167	117	64	69	98	112	132	1,298	<b>64.3%</b>	
Hawaii	1	-	-	-	2	-	3	-	-	-	-	2	8	-	-	-	-	1	-	-	2	1	1	2	-	7	<b>14.3%</b>	
Idaho	15	25	11	11	6	14	9	1	9	5	3	7	116	3	2	22	7	5	12	10	10	6	4	10	27	<b>-1.7%</b>		
Montana	12	22	19	4	21	20	5	5	9	11	9	7	144	14	18	19	18	16	12	5	7	5	4	10	16	<b>0.0%</b>		
Nevada	39	75	74	67	101	79	76	73	38	53	38	58	771	48	73	21	54	41	27	42	28	15	21	61	39	470		

## Canada Arrivals By Month

Months	2010	2009	ACT. CHG.	% Change
Jan	5,533	4,882	651	13.3%
Feb	5,095	5,243	(148)	-2.8%
Mar	4,799	5,330	(531)	-10.0%
Apr	2,713	2,820	(107)	-3.8%
May	1,976	888	1,088	122.5%
Jun	1,070	613	457	74.6%
Jul	1,655	851	804	94.5%
Aug	1,635	783	852	108.8%
Sept	1,284	589	695	118.0%
Oct	1,467	655	812	124.0%
Nov	1,422	2,204	(782)	-35.5%
Dec	3,505	3,705	(200)	-5.4%
<b>Total</b>	<b>32,154</b>	<b>28,563</b>	<b>3,591</b>	<b>12.6%</b>

## Canada Tourist Arrivals by Month



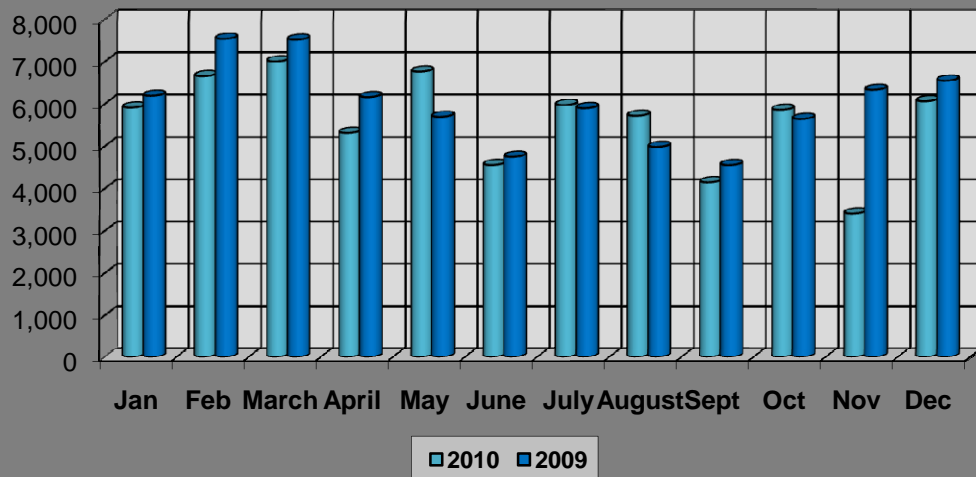
**Canada Tourist Arrivals by Province January- December 2010/09**

Province	2010													2009													% Change
	Jan	Feb	Mar	Apr	May	June	July	Aug	Sept	Oct	Nov	Dec	YTD Total	Jan	Feb	Mar	Apr	May	June	July	Aug	Sept	Oct	Nov	Dec	YTD Total	
Alberta	449	341	295	220	152	100	126	146	113	116	182	262	2,502	372	324	306	322	94	36	83	35	30	41	182	266	2,091	19.7%
British Columbia	126	145	118	87	81	48	80	51	58	48	30	81	953	192	123	175	167	30	31	48	20	40	43	123	131	1,123	-15.1%
Manitoba	77	90	34	23	14	0	11	10	9	9	19	45	341	42	50	35	16	3	1	2	2	3	2	16	36	208	63.9%
New Brunswick	26	42	43	37	6	9	0	6	3	2	2	24	200	37	56	31	30	7	2	1	1	2	4	4	20	195	2.6%
New Foundland	1	6	1	2	0	0	4	9	1	3	1	0	28	4	5	7	7	1	0	3	2	2	3	4	4	42	-33.3%
Nova Scotia	19	68	49	19	24	8	12	11	12	3	13	24	262	22	33	63	26	5	1	13	5	3	1	18	28	218	20.2%
Ontario	3,908	3,610	3,826	2,022	1,497	826	1,197	1,193	842	1,121	982	2,668	23,692	3,393	4,017	4,090	1,954	605	416	508	585	436	489	1,657	2,703	20,853	13.6%
Prince Edward Island	7	5	8	1	2	3	4	3	1	3	6	3	46	6	11	13	5	0	4	0	1	2	2	3	9	56	-17.9%
Quebec	594	572	354	192	114	59	166	106	129	113	113	316	2,828	595	432	415	205	83	86	123	75	40	41	165	413	2,673	5.8%
Saskatchewan	149	95	26	19	5	2	2	6	4	4	19	14	345	85	67	36	24	7	0	0	2	3	0	18	37	279	23.7%
No Stated CAN. Prov.	177	121	45	91	81	15	53	94	112	45	55	68	957	134	125	159	64	53	36	70	55	28	29	14	58	825	16.0%
<b>Total</b>	<b>5,533</b>	<b>5,095</b>	<b>4,799</b>	<b>2,713</b>	<b>1,976</b>	<b>1,070</b>	<b>1,655</b>	<b>1,635</b>	<b>1,284</b>	<b>1,467</b>	<b>1,422</b>	<b>3,505</b>	<b>32,154</b>	<b>4,882</b>	<b>5,243</b>	<b>5,330</b>	<b>2,820</b>	<b>888</b>	<b>613</b>	<b>851</b>	<b>783</b>	<b>589</b>	<b>655</b>	<b>2,204</b>	<b>3,705</b>	<b>28,563</b>	<b>12.6%</b>

## United Kingdom Arrivals By Month

Months	2010	2009	ACT. CHG.	% Change
Jan	5,917	6,194	(277)	-4.5%
Feb	6,659	7,542	(883)	-11.7%
March	7,008	7,522	(514)	-6.8%
April	5,318	6,163	(845)	-13.7%
May	6,766	5,698	1,068	18.7%
June	4,560	4,752	(192)	-4.0%
July	5,975	5,903	72	1.2%
August	5,723	4,985	738	14.8%
Sept	4,150	4,558	(408)	-9.0%
Oct	5,865	5,648	217	3.8%
Nov	3,412	6,336	(2,924)	-46.1%
Dec	6,064	6,552	(488)	-7.4%
<b>Total</b>	<b>67,417</b>	<b>71,853</b>	<b>(4,436)</b>	<b>-6.2%</b>

### UK Arrivals by Month

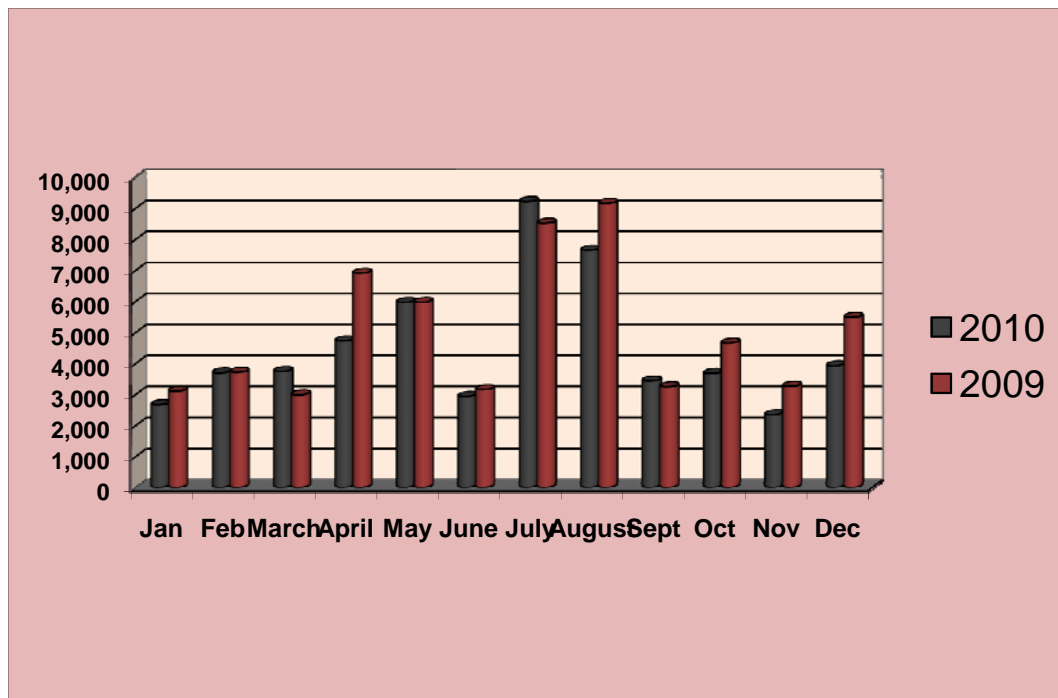


UK Arrivals by County January- December 2010/09

County	2010												2009												% Change 2010/09		
	Jan	Feb	Mar	Apr	May	June	July	August	Sept	Oct	Nov	Dec	YTD Total	Jan	Feb	Mar	Apr	May	June	July	August	Sept	Oct	Nov		Dec	YTD Total
Avon	0	0	0	0	0	0	0	0	0	0	0	0	0	0	0	0	0	0	0	0	0	0	0	0	0	#DIV/0!	
Bedfordshire	37	33	45	52	61	50	21	17	27	37	11	36	427	27	39	32	43	35	57	32	53	25	57	35	26	461	-7.4%
Berkshire	80	81	105	87	96	48	84	92	47	80	59	76	935	50	73	65	38	49	40	77	67	37	46	52	70	664	40.8%
Buckinghamshire	37	43	57	36	50	14	42	45	35	32	9	35	435	31	43	44	50	37	37	55	54	16	43	16	47	473	-8.0%
Cambridgeshire	60	59	46	39	47	18	36	42	46	30	18	41	482	30	50	34	47	35	44	60	58	25	48	26	59	516	-6.6%
Cheshire	19	26	42	17	22	12	21	28	19	29	9	13	257	13	20	5	15	14	22	31	22	8	17	7	17	191	34.6%
Cleveland	1	3	2	1	0	2	3	1	2	0	0	0	15	0	1	1	0	2	1	1	1	4	0	0	0	11	36.4%
Cornwall & Isle of Sc.	18	20	16	4	6	1	5	3	7	20	4	12	116	10	13	11	3	1	10	6	3	7	12	3	9	88	31.8%
Cumbria	6	1	0	0	0	7	1	1	2	2	0	0	20	3	1	0	0	0	5	2	0	0	3	0	1	15	33.3%
Derbyshire	14	14	47	21	26	19	25	27	8	16	16	11	244	15	14	27	30	24	24	18	21	0	6	10	21	210	16.2%
Devon	28	38	46	43	38	28	29	15	23	30	14	25	357	38	70	40	39	28	30	21	25	10	24	24	29	378	-5.6%
Dorset	32	45	52	37	46	22	21	39	11	36	32	51	424	39	29	31	33	23	55	22	29	20	23	24	28	356	19.1%
Durham	19	34	83	100	66	99	85	66	4	53	59	69	737	1	14	14	10	27	7	20	19	8	28	31	17	196	276.0%
East Sussex	38	48	51	43	36	23	29	24	53	79	56	56	536	21	23	32	10	15	13	6	5	5	15	17	20	182	194.5%
Essex	228	332	390	216	293	223	211	229	198	262	211	273	3,066	271	375	512	352	213	225	223	155	191	273	220	230	3,240	-5.4%
Gloucester	52	51	71	73	59	45	45	70	25	61	51	71	674	50	58	53	43	43	28	54	29	27	40	31	69	525	28.4%
Greater London	1,084	1,069	1,510	1,117	1,343	721	1,211	1,163	655	948	485	1,380	12,686	976	1,153	1,067	1,365	1,135	1,041	1,388	1,206	787	870	771	1,493	13,252	-4.3%
Greater Manchester	1	9	13	11	18	13	6	12	12	11	8	17	131	19	9	9	17	21	19	11	8	8	5	13	12	151	-13.2%
Hampshire & Isle of Wt	82	113	123	87	120	66	63	38	73	61	40	80	946	83	96	90	86	85	71	68	77	77	63	141	72	1,009	-6.2%
Hereford & Worcester	6	18	27	13	17	38	48	17	18	9	9	17	237	5	10	13	9	4	4	12	10	7	5	6	1	86	175.6%
Hertfordshire	73	86	96	46	56	34	48	72	70	73	51	99	804	57	61	67	60	44	70	94	83	38	52	53	73	752	6.9%
Kent	163	190	224	189	206	123	172	157	148	194	70	233	2,069	87	143	173	165	131	114	137	143	98	164	123	146	1,624	27.4%
Lancashire	42	51	46	32	22	14	24	16	25	30	13	26	341	34	30	22	28	22	29	20	18	11	14	14	21	263	29.7%
Leicestershire	44	33	56	54	57	41	64	40	17	59	17	43	525	22	40	33	39	42	11	26	18	22	18	35	49	355	47.9%
Lincolnshire	11	17	17	7	30	10	0	9	9	17	4	8	139	17	16	16	5	12	35	6	9	10	8	13	11	158	-12.0%
Merseyside	9	5	4	5	7	0	6	6	9	8	5	3	67	8	5	1	6	8	8	1	2	9	8	3	4	63	6.3%
Norfolk	44	33	30	27	27	15	18	19	23	27	12	22	297	22	28	25	37	30	21	37	13	17	15	12	26	283	4.9%
Northamptonshire	22	25	54	41	60	48	50	35	15	40	30	44	464	15	30	33	35	13	13	24	15	8	10	28	26	250	85.6%
Nottinghamshire	19	32	36	9	23	31	24	24	36	21	16	22	293	23	36	29	27	20	13	35	22	25	30	16	30	306	-4.2%
Oxfordshire	91	29	40	30	33	31	20	17	12	15	5	38	361	74	105	52	97	78	70	72	81	35	40	77	70	851	-57.6%
Scotland, Wales & N.	285	275	375	224	401	377	356	234	343	511	344	610	4,335	241	267	204	213	227	290	285	239	248	335	224	194	2,967	46.1%
Shropshire	19	15	12	10	12	9	14	12	12	5	9	6	135	5	16	9	10	4	17	5	4	3	5	3	6	87	55.2%
Somerset	38	66	67	39	27	31	55	25	32	50	9	9	448	55	44	32	35	25	48	26	38	16	37	22	32	410	9.3%
Staffordshire	31	45	113	136	153	191	185	157	38	136	144	229	1,558	32	24	31	29	33	33	37	54	46	26	52	59	456	241.7%
Suffolk	29	25	64	37	33	30	40	38	22	42	30	61	451	23	18	32	22	29	27	21	19	16	49	25	32	313	44.1%
Surrey	197	199	290	201	263	166	169	189	104	187	137	159	2,261	77	152	156	150	137	80	134	131	85	107	125	137	1,471	53.7%
Warwickshire	16	36	33	21	23	22	37	26	16	12	7	23	272	26	20	24	15	9	11	8	2	15	6	8	26	170	60.0%
West Midlands	46	53	68	50	73	40	49	58	86	48	21	91	683	52	55	33	36	43	58	70	44	42	50	38	54	575	18.8%
West Sussex	196	129	166	202	145	143	91	103	134	115	87	126	1,637	136	173	158	138	115	95	112	114	108	116	201	180	1,646	-0.5%
Wiltshire	28	48	40	31	20	9	35	20	22	27	8	28	316	17	24	23	16	13	13	14	25	8	18	24	18	213	48.4%
Yorkshire & Humbersid	286	235	315	348	317	239	222	193	257	218	207	288	3,125	267	293	285	244	282	164	250	275	184	167	344	287	3,042	2.7%
Not Stated	2,386	2,995	2,136	1,582	2,434	1,507	2,310	2,344	1,455	2,234	1,095	1,633	24,111	3,222	3,871	4,004	2,566	2,590	1,799	2,382	1,794	2,252	2,795	3,469	2,876	33,620	-28.3%
<b>Total</b>	<b>5,917</b>	<b>6,659</b>	<b>7,008</b>	<b>5,318</b>	<b>6,766</b>	<b>4,560</b>	<b>5,975</b>	<b>5,723</b>	<b>4,150</b>	<b>5,865</b>	<b>3,412</b>	<b>6,064</b>	<b>67,417</b>	<b>6,194</b>	<b>7,542</b>	<b>7,522</b>	<b>6,163</b>	<b>5,698</b>	<b>4,752</b>	<b>5,903</b>	<b>4,985</b>	<b>4,558</b>	<b>5,648</b>	<b>6,336</b>	<b>6,552</b>	<b>71,879</b>	<b>-6.2%</b>

## Caribbean Arrivals By Month

Months	2010	2009	ACT. CHG.	% Change
Jan	2,668	3,109	(441)	-14.2%
Feb	3,697	3,717	(20)	-0.5%
March	3,743	2,989	754	25.2%
April	4,729	6,904	(2,175)	-31.5%
May	5,968	5,971	(3)	-0.1%
June	2,937	3,157	(220)	-7.0%
July	9,220	8,519	701	8.2%
August	7,651	9,158	(1,507)	-16.5%
Sept	3,434	3,248	186	5.7%
Oct	3,678	4,657	(979)	-21.0%
Nov	2,346	3,266	(920)	-28.2%
Dec	3,927	5,488	(1,561)	-28.4%
<b>Total</b>	<b>53,998</b>	<b>60,183</b>	<b>(6,185)</b>	<b>-10.3%</b>



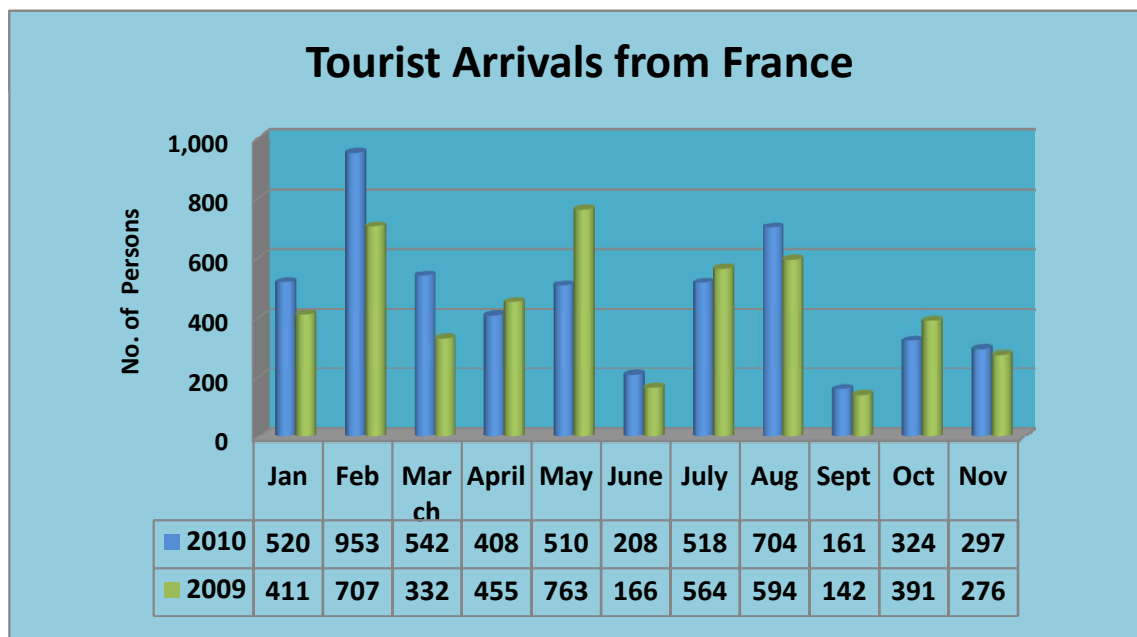
**TOURIST ARRIVALS FROM THE CARIBBEAN, JANUARY- DECEMBER 2010/09**

COUNTRIES	2010												2009												% Change		
	Jan	Feb	Mar	April	May	June	July	August	Sept	Oct	Nov	Dec	Total	Jan	Feb	Mar	April	May	June	July	August	Sept	Oct	Nov		Dec	Total
<b>CARICOM *</b>	1,704	2,082	2,495	2,763	3,617	2,197	3,987	3,759	2,490	2,046	1,565	2,214	30,919	2,075	2,192	2,007	4,645	3,361	2,244	4,060	3,599	2,236	2,900	2,346	2,724	34,389	-10.1%
<b>OECS</b>	514	630	909	896	981	694	1,466	1,258	814	699	511	791	10,163	641	657	725	1,420	1,042	754	1,216	932	654	1,052	636	886	10,615	-4.3%
Antigua & Barbuda	104	168	226	179	220	129	285	242	158	177	99	139	2,126	148	118	142	274	263	145	194	182	164	201	137	173	2,141	-0.7%
Dominica	167	149	173	344	251	180	542	439	254	167	143	257	3,066	139	174	184	449	247	183	459	346	152	248	167	248	2,996	2.3%
Grenada	78	120	151	113	151	104	160	176	106	97	105	128	1,489	130	164	132	248	147	110	161	122	76	204	113	156	1,763	-15.5%
Montserrat	8	5	12	15	11	16	21	14	11	8	6	6	133	5	7	7	13	13	7	22	10	5	23	15	16	143	-7.0%
St Christopher & Nevis	45	56	64	75	99	65	111	57	84	68	44	72	840	58	46	57	136	116	82	62	61	89	93	62	53	915	-8.2%
St Vincent & Grenadines	112	132	283	170	249	200	347	330	201	182	114	189	2,509	161	148	203	300	256	227	318	211	168	283	142	240	2,657	-5.6%
<b>OTHER CARICOM</b>	1,190	1,452	1,586	1,867	2,636	1,503	2,521	2,501	1,676	1,347	1,054	1,423	20,756	1,434	1,535	1,282	3,225	2,319	1,490	2,844	2,667	1,582	1,848	1,710	1,838	23,774	-12.7%
Barbados	440	448	696	643	771	530	909	782	484	570	368	560	7,201	578	528	545	1202	964	565	1126	997	603	681	711	769	9,269	-22.3%
Belize	6	2	6	9	8	13	11	15	6	7	7	5	95	3	8	11	8	7	5	20	7	11	16	11	8	115	-17.4%
Guyana	125	107	130	147	178	98	322	209	184	96	125	146	1,867	116	84	105	212	196	100	225	229	137	176	102	167	1,849	1.0%
Jamaica	154	112	124	163	213	150	169	197	159	102	94	119	1,756	188	156	101	372	183	125	176	169	122	206	171	154	2,123	-17.3%
Trinidad & Tobago	417	722	555	812	1,215	600	1,019	1,185	792	531	410	530	8,788	472	676	454	1,010	851	646	1,181	1,200	670	679	641	659	9,139	-3.8%
Bahamas	14	11	9	20	19	19	19	37	15	13	5	16	197	23	15	10	246	21	9	21	15	11	18	11	12	412	-52.2%
Anguilla	9	20	18	32	23	25	13	10	10	11	21	9	201	30	15	14	48	24	3	21	15	11	14	15	14	224	-10.3%
Bermuda	11	23	26	16	140	13	19	20	7	4	8	12	299	8	33	19	70	39	8	23	10	6	14	20	22	272	9.9%
British Virgin Island	14	6	21	22	65	52	40	38	14	11	15	26	324	11	14	15	14	30	26	47	22	11	40	23	26	279	16.1%
Turks & Caicos Island	-	1	1	3	4	3	-	8	5	2	1	-	28	5	6	8	43	4	3	4	3	-	4	5	7	92	-69.6%
<b>FRENCH WEST INDIES</b>	750	1,387	1,017	1,707	2,075	492	4,870	3,645	762	1,438	651	1,529	20,323	695	1,323	770	1,900	2,343	693	4,164	5,343	805	1,461	733	2,491	22,721	-10.6%
Martinique	692	1252	918	1503	1859	428	4382	3143	646	1287	564	1394	18,068	635	1247	703	1742	2117	610	3716	4812	737	1348	670	2318	20,655	-12.5%
Guadeloupe	58	135	99	204	216	64	488	502	116	151	87	135	2,255	60	76	67	158	226	83	448	531	68	113	63	173	2,066	9.1%
<b>DUTCH WEST INDIES</b>	47	39	58	52	94	58	111	59	34	41	16	45	654	61	40	45	119	51	35	69	73	47	85	51	49	725	-9.8%
Aruba	3	2	4	2	2	10	3	4	3	4	1	9	47	12	4	5	17	1	2	1	5	5	7	6	1	66	-28.8%
Bonaire	4	5	1	2	5	1	6	4	3	0	0	2	33	3	4	1	8	1	1	3	4	2	2	0	0	29	13.8%
Curacao	13	12	12	23	28	12	16	17	8	13	4	5	163	22	6	7	37	10	7	6	22	14	21	18	11	181	-9.9%
St Maarten	26	11	40	22	43	34	73	27	20	24	9	29	358	23	19	21	45	35	22	56	39	24	54	21	30	389	-8.0%
Other Dutch W.L	1	9	1	3	16	1	13	7	0	0	2	0	53	1	7	11	12	4	3	3	2	1	6	7	60	-11.7%	
<b>OTHER CARIBBEAN</b>	167	189	173	207	182	190	252	188	148	153	114	139	2,102	278	162	167	240	216	185	226	143	160	211	136	224	2,348	-10.5%
Cuba	12	25	6	22	5	18	18	22	18	19	20	14	199	8	11	4	8	6	8	18	14	11	15	11	7	121	64.5%
Dominican Republic	9	8	10	20	7	9	5	3	15	7	10	12	115	41	8	13	10	9	7	3	4	5	15	8	10	133	-13.5%
Haiti	6	14	19	15	17	10	5	3	8	11	3	5	116	8	11	10	28	15	14	5	5	10	2	4	9	121	-4.1%
Puerto Rico	71	77	73	69	84	82	82	86	53	62	46	44	829	134	67	93	88	98	70	67	53	78	102	50	31	931	-11.0%
Suriname	3	12	7	9	11	11	16	5	8	3	2	1	88	4	1	7	16	2	4	23	18	12	6	7	4	104	-15.4%
US Virgin Islands	61	49	50	67	44	57	116	57	40	48	30	56	675	65	52	32	73	73	78	103	44	40	59	50	159	828	-18.5%
Other/Not Stated	5	4	8	5	14	3	10	12	6	3	3	7	80	18	12	8	17	13	4	7	5	4	12	6	4	110	-27.3%
<b>TOTAL</b>	2,668	3,697	3,743	4,729	5,968	2,937	9,220	7,651	3,434	3,678	2,346	3,927	53,998	3,109	3,717	2,989	6,904	5,971	3,157	8,519	9,158	3,248	4,657	3,266	5,488	60,183	-10.3%

\* Caricom countries consist "OECS & "Other Caricom"

## Tourist Arrivals From France By Month

Months	2010	2009	ACT. CHG.	% Change
Jan	520	411	109	26.5%
Feb	953	707	246	34.8%
March	542	332	210	63.3%
April	408	455	(47)	-10.3%
May	510	763	(253)	-33.2%
June	208	166	42	25.3%
July	518	564	(46)	-8.2%
Aug	704	594	110	18.5%
Sept	161	142	19	13.4%
Oct	324	391	(67)	-17.1%
Nov	297	276	21	7.6%
Dec	677	555	122	22.0%
<b>Total</b>	<b>5,822</b>	<b>5,356</b>	<b>466</b>	<b>8.7%</b>



## German Tourist Arrivals By Month

Months	2010	2009	ACT. CHG.	% Change
Jan	595	205	390	190.2%
Feb	453	212	241	113.7%
Mar	468	229	239	104.4%
Apr	278	188	90	47.9%
May	290	144	146	101.4%
Jun	201	85	116	136.5%
Jul	264	149	115	77.2%
Aug	287	113	174	154.0%
Sept	170	61	109	178.7%
Oct	246	115	131	113.9%
Nov	440	538	(98)	-18.2%
Dec	450	377	73	19.4%
<b>Total</b>	<b>4,142</b>	<b>2,416</b>	<b>1,726</b>	<b>71.4%</b>

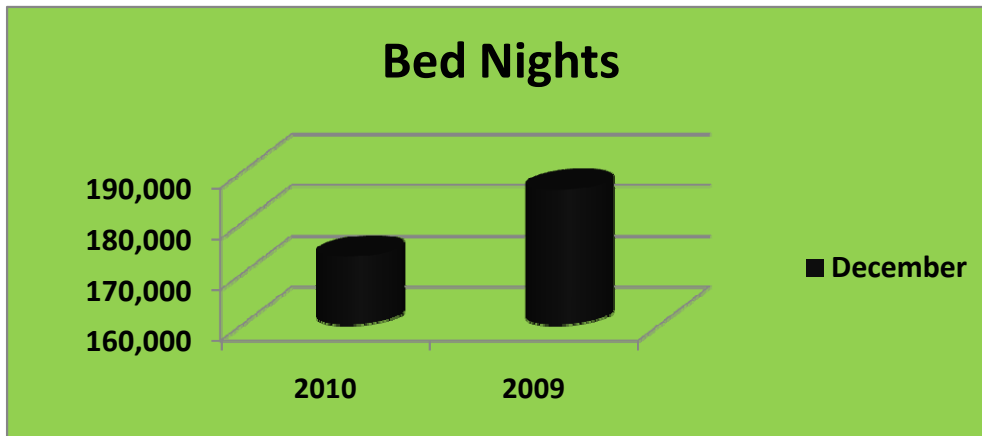


## Marriages January - December 2010/2009

Month	2010	2009	Actual Change	% Change
January	147	154	-7	-4.5%
February	160	192	-32	-16.7%
March	209	197	12	6.1%
April	248	270	-22	-8.1%
May	271	280	-9	-3.2%
June	257	250	7	2.8%
July	187	185	2	1.1%
August	161	145	16	11.0%
September	183	149	34	22.8%
October	199	146	53	36.3%
November	101	179	-78	-43.6%
December	201	194	7	3.6%
<b>Total</b>	<b>2,324</b>	<b>2,341</b>	<b>-17</b>	<b>-0.7%</b>

### Bed-Nights by Month \*\*

Months	2010	2009	ACT. CHG.	% Change
December	173,278	186,344	(13,066)	-7.0%
<b>Total</b>	<b>173,278</b>	<b>186,344</b>	<b>(13,066)</b>	<b>-7.0%</b>



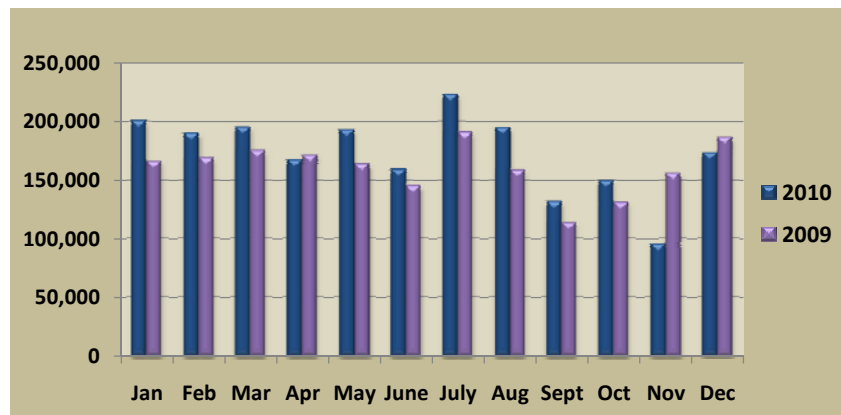
### Bed-Nights by Markets December 2010

Markets	2010	2009	ACT.CHG.	% CHANGE
USA	67,904	61,160	6,744	11.0%
UK	51,068	59,443	(8,375)	-14.1%
Caribbean	12,128	20,352	(8,224)	-40.4%
Canada	26,468	28,672	(2,204)	-7.7%
Rest of Europe	5,975	8,146	(2,171)	-26.7%
Germany	3,192	2,832	360	12.7%
France	4,081	3,612	469	13.0%
Rest of World	2,462	2,128	334	15.7%
<b>Total</b>	<b>173,278</b>	<b>186,344</b>	<b>(13,066)</b>	<b>-7.0%</b>

\*\* Bednights figures are less persons staying in private accommodation (\*) Avg. Length of Stay

### Bed-Nights by Month \*\*

Months	2010	2009	ACT. CHG.	% Change
Jan	200,393	165,924	34,469	20.8%
Feb	189,784	168,837	20,947	12.4%
Mar	195,028	175,013	20,015	11.4%
Apr	167,097	171,062	(3,965)	-2.3%
May	192,659	163,565	29,094	17.8%
June	159,026	145,036	13,990	9.6%
July	222,913	190,538	32,375	17.0%
Aug	194,675	158,384	36,291	22.9%
Sept	131,649	113,712	17,937	15.8%
Oct	149,432	130,909	18,523	14.1%
Nov	95,440	155,817	(60,377)	-38.7%
Dec	173,278	186,344	(13,066)	-7.0%
<b>Total</b>	<b>2,071,374</b>	<b>1,925,141</b>	<b>146,233</b>	<b>7.6%</b>



### Bed-Nights by Markets YTD January - December 2010/09

Markets	2010	2009	ACT.CHG.	% CHANGE
USA	858,633	674,234	184,399	27.3%
UK	601,962	652,706	(50,744)	-7.8%
Caribbean	221,067	254,617	(33,550)	-13.2%
Canada	231,764	205,595	26,169	12.7%
Rest of Europe	60,846	56,684	4,162	7.3%
Germany	33,824	17,888	15,936	89.1%
France	33,676	31,795	1,881	5.9%
Rest of World	29,602	31,622	(2,020)	-6.4%
<b>Total</b>	<b>2,071,374</b>	<b>1,925,141</b>	<b>146,233</b>	<b>7.6%</b>

\*\* Bednights figures are less persons staying in private accommodation (\*) Avg. Length of Stay

## Bed Nights By Month December

Markets	Arrivals	Other Acc.	Avg.Length of Stay	Bednights
USA	10,507	2,365	8.34	67,904
UK	6,064	1,228	10.56	51,068
Caribbean	3,927	2,457	8.25	12,128
Canada	3,505	628	9.2	26,468
Rest of Europe	999	374	9.56	5,975
Germany	450	171	11.44	3,192
France	677	130	7.46	4,081
Rest of World	419	216	12.13	2,462
<b>TOTAL</b>	<b>26,548</b>	<b>7,569</b>	<b>9.13</b>	<b>173,278</b>

\*\* Bednights figures are less persons staying in private accommodation (\*) Avg. Length of Stay

## Tourist Arrivals by Length of Stay November 2010

December,2010 Length of Stay							
Country	1 - 3 Days	4 - 7 Days	8 - 14 Days	15+ Days	Not Stated	Total (excl. Not Stated)	Avg. Length of Stay
<b>Total</b>	2,717	15,566	5,937	2,324	4	26,544	9.13
<b>United States</b>	625	7,442	1,925	513	2	10,505	8.34
<b>Canada</b>	78	2,545	646	236	0	3,505	9.2
<b>Europe</b>	589	4,009	2,582	1,010	0	8,190	10.32
<b>Major Europe</b>	493	3,669	2,382	871	0	7,415	10.28
France	115	362	159	41	0	677	7.46
Germany	44	190	136	80	0	450	11.44
Holland	3	19	16	4	0	42	9.19
Italy	35	79	42	26	0	182	8.73
United Kingdom	296	3,019	2,029	720	0	6,064	10.56
Rest of Europe	83	277	167	126	0	653	10.98
Austria	3	37	21	8	0	69	10.04
Belgium	3	17	17	3	0	40	10.33
Denmark	3	15	0	13	0	31	13.23
Greece	9	1	0	0	0	10	1.7
Ireland	8	64	65	15	0	152	11.18
Norway	9	30	10	30	0	79	11.71
Portugal	1	7	14	1	0	23	9
Spain	12	23	6	12	0	53	9.23
Sweden	28	52	17	18	0	115	10.47
Switzerland	7	25	17	26	0	75	14.36
<b>Other Europe</b>	13	63	33	13	0	122	9.34
<b>C'wealth Caribbean</b>	811	782	399	229	0	2,221	8.29
<b>Caribbean</b>	1,307	1,422	709	489	0	3,927	8.25
<b>Caricom</b>	807	772	374	214	0	2,167	8.16
<b>OECS</b>	302	293	114	82	0	791	8.23
Antigua and Barbuda	48	51	23	17	0	139	8.4
Dominica	100	119	20	18	0	257	7.71
Grenada	48	44	22	14	0	128	8.34
Montserrat	4	1	0	1	0	6	20.67
St. Kitts and Nevis	13	26	20	13	0	72	13.65
St. Vincent & Gren.	89	52	29	19	0	189	6.26
<b>Other Caricom</b>	505	479	26	132	0	1,376	8.12
Barbados	220	162	124	54	0	560	8.07
Belize	0	5	0	0	0	5	5.6
Guyana	36	49	39	22	0	146	10.7
Jamaica	43	41	20	15	0	119	10.38
Trinidad and Tobago	205	215	72	38	0	530	6.88
Bahamas	1	7	5	3	0	16	11.63
<b>Other C'wealth Carib</b>	4	10	25	15	0	54	13.63
Anguilla	2	2	2	3	0	9	11.56
Bermuda	0	7	5	0	0	12	7.75
British Virgin Is.	2	1	13	10	0	26	16.27
Cayman Islands	0	0	5	2	0	7	16.57
<b>French West Indies</b>	432	591	269	237	0	1,529	8.21
Martinique	387	517	258	232	0	1,394	8.44
Guadeloupe	45	74	11	5	0	135	5.77
<b>Dutch West Indies</b>	4	18	17	6	0	45	10.58
Aruba	2	5	2	0	0	9	5.33
Curacao	1	1	1	2	0	5	11.6
St. Maarten	0	11	14	4	0	29	12.41
<b>Other Caribbean</b>	60	31	24	17	0	132	7.36
Cuba	4	3	3	4	0	14	12.07
Dominican Republic	6	2	0	4	0	12	7.33
Haiti	2	0	1	2	0	5	9.4
Puerto Rico	41	3	0	0	0	44	1.61
US Virgin Islands	6	23	20	7	0	56	10.61
Suriname	1	0	0	0	0	1	3
<b>South America</b>	37	32	20	16	0	105	9.69
Argentina	1	1	1	1	0	4	29
Brazil	5	1	6	0	0	12	5.75
Colombia	6	0	0	1	0	7	5.57
Venezuela	15	9	8	5	0	37	11.49
<b>Other South America</b>	10	21	5	9	0	45	8.18
<b>Central America</b>	8	7	5	14	0	34	24.09
<b>Other</b>	70	106	50	46	2	272	13.64

Source: SLTB

Primary data is obtained from the international ED Cards

	<b>2010</b>	<b>2009</b>	<b>Difference</b>	<b>% Increase</b>
<b>Stay Over</b>	<b>305,937</b>	<b>278,491</b>	27,446	9.9%
<b>Cruise</b>	<b>670,043</b>	<b>699,306</b>	(29,263)	-4.2%
<b>Yachts(Rodney Bay Marina)</b>	<b>32,052</b>	<b>31,997</b>	55	0.2%
<b>Yachts(Marigot Bay)</b>	<b>10,259</b>	<b>0</b>	10,259	#DIV/0!
<b>Total</b>	<b>1,018,291</b>	<b>1,009,794</b>	<b>8,497</b>	<b>0.8%</b>

### **TOURIST ARRIVALS BY MARKETS JANUARY -DECEMBER 2010/09**

<b>Markets</b>	<b>2010</b>	<b>2009</b>	<b>ACT.CHG.</b>	<b>% CHANGE</b>
USA	129,085	98,685	30,400	30.8%
UK	67,417	71,853	(4,436)	-6.2%
Caribbean	53,998	60,183	(6,185)	-10.3%
Canada	32,154	28,563	3,591	12.6%
Rest of Europe	8,314	7,194	1,120	15.6%
Germany	4,142	2,416	1,726	71.4%
France	5,822	5,356	466	8.7%
Rest of World	5,005	4,241	764	18.0%
<b>Total</b>	<b>305,937</b>	<b>278,491</b>	<b>27,446</b>	<b>9.9%</b>

	<b>2010</b>	<b>2009</b>	<b>% Change</b>
<b>Bed-Nights</b>	<b>2,071,374</b>	<b>1,925,141</b>	<b>7.6%</b>

\*\*Yacht arrivals from Marigot Bay for 2009 are not available

## TOURIST ARRIVALS DECEMBER 2010/2009

	2010	2009	ACT.CHG.	% CHANGE
<b>Cruise</b>	<b>107,371</b>	<b>109,855</b>	(2,484)	-2.3%
<b>Yachts(Rodney Bay)</b>	<b>3,221</b>	<b>3,554</b>	(333)	-9.4%
<b>Yachts(Marigot Bay)</b>	<b>1,260</b>		1,260	#DIV/0!
<b>TOTAL</b>	<b>111,852</b>	<b>113,409</b>	(1,557)	-1.4%

	2010	2009	ACT.CHG.	% CHANGE
<b>USA</b>	<b>10,507</b>	<b>9,170</b>	1,337	14.6%
<b>UK</b>	<b>6,064</b>	<b>6,552</b>	(488)	-7.4%
<b>Caribbean</b>	<b>3,927</b>	<b>5,488</b>	(1,561)	-28.4%
<b>Canada</b>	<b>3,505</b>	<b>3,705</b>	(200)	-5.4%
<b>Rest of Europe</b>	<b>999</b>	<b>1,083</b>	(84)	-7.8%
<b>Germany</b>	<b>450</b>	<b>377</b>	73	19.4%
<b>France</b>	<b>677</b>	<b>555</b>	122	22.0%
<b>Rest of World</b>	<b>419</b>	<b>405</b>	14	3.5%
<b>Total</b>	<b>26,548</b>	<b>27,335</b>	(787)	-2.9%

## BED NIGHTS FOR DECEMBER 2010

	2010	2009	ACT. CHG.	% Change
<b>Bed-Nights</b>	<b>173,278</b>	<b>186,344</b>	(13,066)	-7.0%

\*\*Yacht arrivals from Marigot Bay for 2009 are not available